

# L&L LOUVERS INC.

12355 DOHERTY STREET  
 RIVERSIDE, CA. 92503  
 (951) 735-9300 FAX:(951)735-4628  
 E-MAIL: info@louver1.com

## TRANSOM ASTRAGALS

**FABRICATION STANDARD FEATURES:**

**MATERIAL:** 18 GAUGE JETKOTE

**CONSTRUCTION:** COUNTERSUNK MOUNTING HOLES

**FINISH:** DARK BRONZE OR GREY POWDER COAT

**DOOR:** FOR 1-3/4" THICK DOOR

**FASTENERS:** #8 X 3/4" FLATHEAD PHILLIPS HEAD SCREWS

**OTHER OPTIONS:**

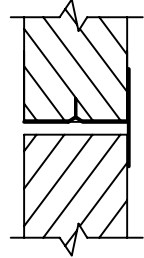
**MATERIALS:** 18 GAUGE # 304 STAINLESS STEEL, #4 FINISH

**FASTENERS:** SPECIAL ORDER COLORS, COLOR CHIP MUST BE PROVIDED WITH ORDER. CALL FOR PRICING.

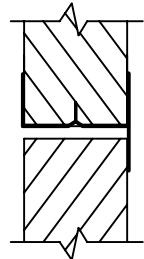
**DOOR THICKNESS:** CALL CUSTOMER SERVICE FOR SPECIAL PRICING.

**HARDWARE PREPS:** **CUTOUT HARDWARE DETAIL SHEET  
 MUST BE PROVIDED BEFORE ORDER  
 CAN BE RELEASED FOR PRODUCTION**

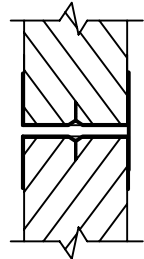
**DTA**  
 Door Transom Astragal  
 for 90° doors.



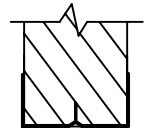
**DTEA**  
 Door Transom Edge with  
 Astragal for 90° doors.



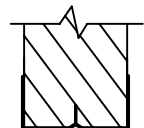
**DTMEA**  
 Door Transom Edges  
 (pair)with Astragal for  
 90° doors.



**FSBC**  
 Formed Steel Bottom  
 Channel for 90° doors.



**DABC**  
 Door Aluminum Bottom  
 Channel, flush mounted.



PROJECT:		
LOCATION:		
ARCHITECT:		
CONTRACTOR:		
CUSTOMER:		DATE: