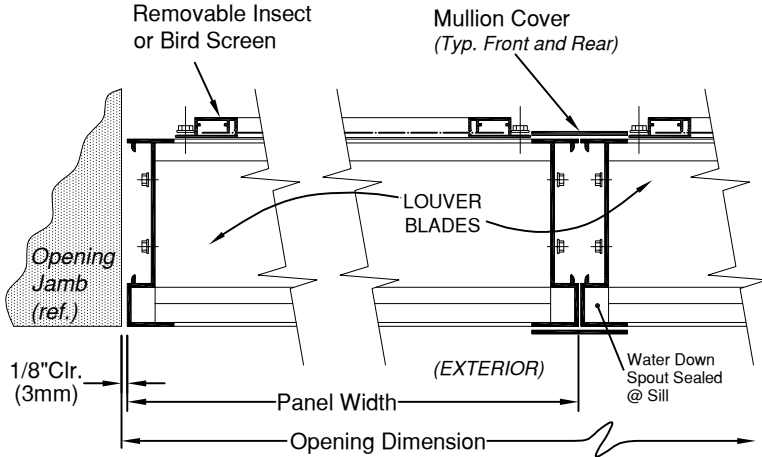


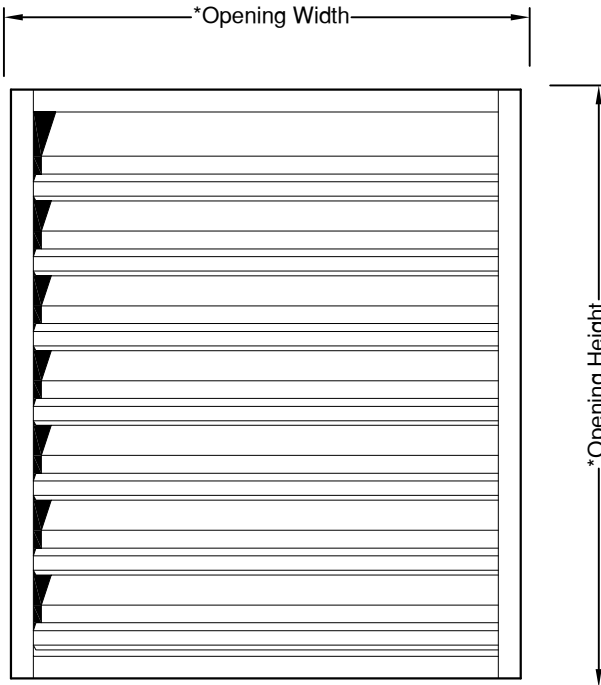
# L&L LOUVERS INC.

12355 DOHERTY STREET  
 RIVERSIDE, CA. 92503  
 (951) 735-9300 FAX:(951)735-4628  
 E-MAIL: info@louver1.com

## MODEL FX-4033 FIXED EXTRUDED ALUMINUM LOUVER 4" Drainable 35° Blade

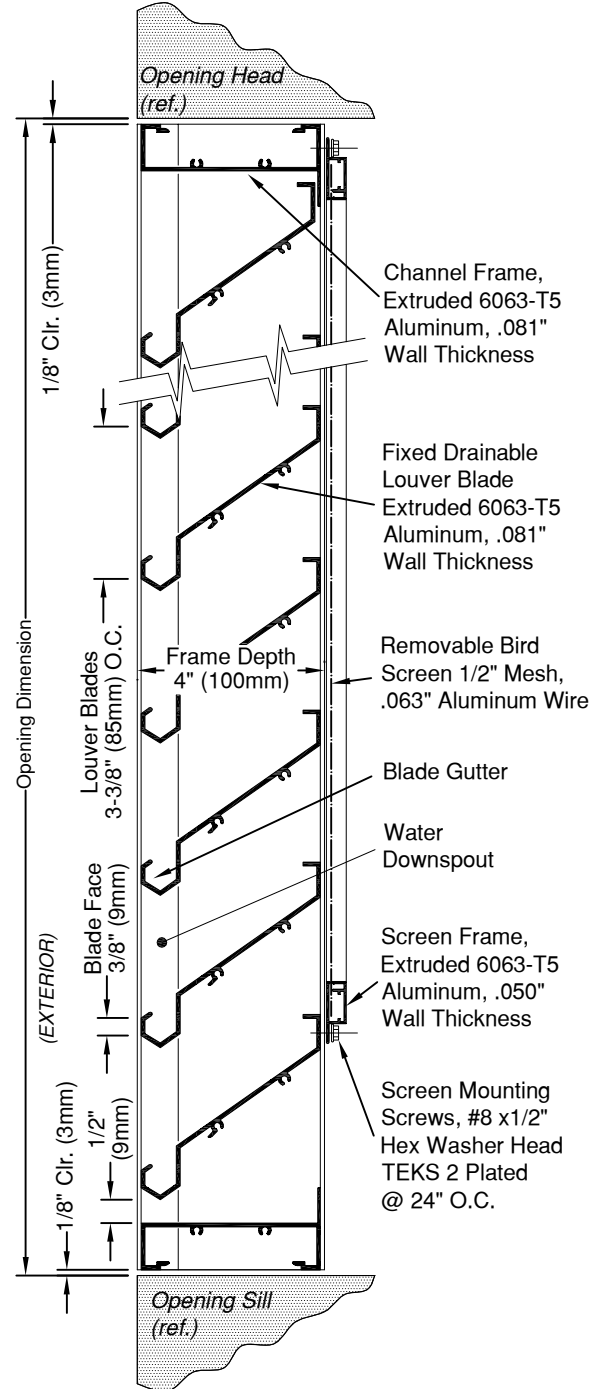


**TYPICAL HORIZONTAL SECTION**



\*Actual net louver size will be  
 1/4" under Opening Dimensions.

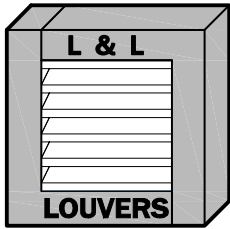
**FRONT ELEVATION**



**TYPICAL VERTICAL SECTION**

PROJECT:	
LOCATION:	
ARCHITECT:	
CONTRACTOR:	
CUSTOMER:	
	DATE:





# L&L LOUVERS INC.

12355 DOHERTY STREET  
 RIVERSIDE, CA. 92503  
 (951) 735-9300 FAX:(951)735-4628  
 E-MAIL: info@louver1.com

## TYPICAL LOUVER INSTALLATION METHODS (EXTRUDED ALUMINUM LOUVERS )

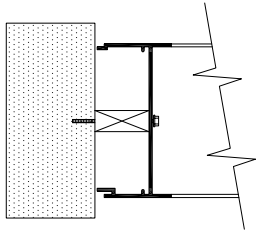


FIGURE B

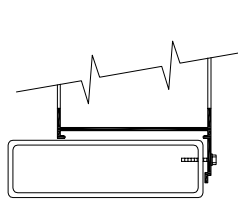


FIGURE D

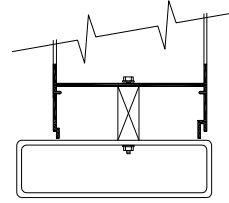


FIGURE E

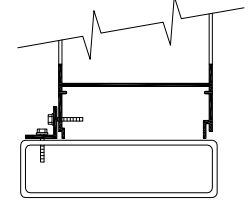


FIGURE F

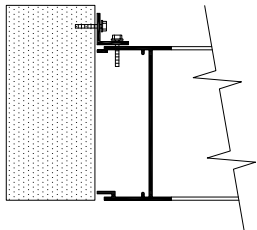


FIGURE C

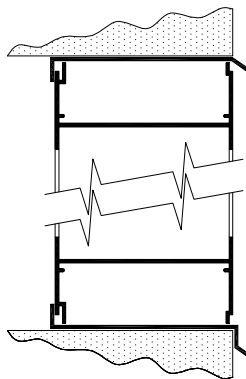


FIGURE G

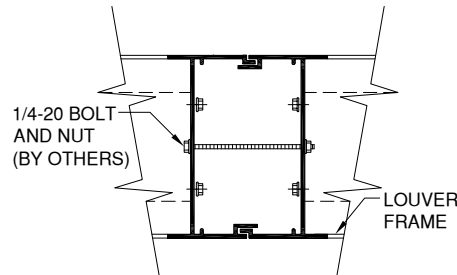


FIGURE I  
 EXPOSED MULLION  
 JOINT DETAIL

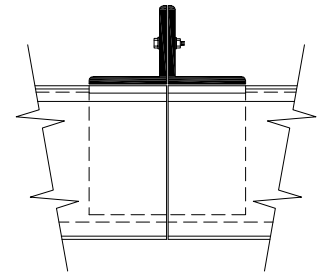


FIGURE J  
 HIDDEN MULLION  
 JOINT DETAIL

- UPON RECEIPT, CHECK SHIPPING CONTAINERS FOR ANY DAMAGE THAT MAY HAVE OCCURRED DURING TRANSIT. NOTE ANY DAMAGES ON THE DELIVERY RECEIPT. IF CONCEALED DAMAGE HAS OCCURRED. YOU MUST NOTIFY THE FREIGHT CARRIER WITHIN (15) DAYS SO THAT CLAIMS CAN BE FIELD.
- PRIOR TO INSTALLING CHECK THE OPENING FOR SQUARENESS AND ANY OBSTRUCTIONS THAT MAY INTERFERE WITH THE MOUNTING OR OPERATION OF THE LOUVER. VERIFY THAT THE LOUVER IS UNDERSIZED APPROXIMATELY 1/4" SO THAT THE LOUVER IS NOT FORCED INTO THE OPENING.
- THE LOUVER MUST BE INSTALLED SQUARE AND FREE FROM RACKING TO ENSURE PROPER PERFORMANCE. THIS SHOULD BE CHECKED PRIOR TO FASTENING THE FRAME TO THE OPENING.
- WHEN JOINING MULTIPLE SECTION LOUVER ASSEMBLIES. LARGER ASSEMBLY MAY REQUIRE ADDITIONAL BRACING ON THE INTERIOR FOR TYPICAL MULLION JOINT DETAILS.
- SECURE LOUVER INTO OPENING USING THE APPROPRIATE TYPE OF FASTENER FOR WHICH THE WALL OPENING IS MADE OF SPACE FASTENERS A MAXIMUM OF 24 INCHES ON CENTER.
- STRAP ANCHORS MAY BE USED IF THEY WERE INSTALLED WHILE MASONRY WAS BEING POURED OR WHILE BLOCKS WERE BEING LAID
- EXPANSION ANCHORS OR LEAD SHIELDS AND BOLTS MADE FOR MASONRY WAY BE USED. FASTENING CAN BE ACHIEVED THROUGH THE LOUVER FRAME OR BY USING ANGLES LOCATED BEHIND THE LOUVER (SEE FIGURES B AND C).
- A FLANGED FRAME LOUVER CAN BE INSTALLED WITH FASTENERS THROUGH THE FLANGE INTO THE WALL (SEE FIGURE D).
- FASTENERS THROUGH THE LOUVER FRAME INTO THE SUBFRAME CAN BE USED IT BLADE SPACING AND ACCESSIBILITY PERMIT (SEE FIGURE E).
- CLIPS, CONTINUOUS ANGLES, OR PLATES MAY BE INSTALLED BEHIND THE LOUVER AND FASTEND TO SUBFRAME (SEE FIGURE F).
- INSTALLATION INTO WOOD FRAMING IS THE SAME AS METAL FRAMING, EXCEPT THAT WOOD SCREWS WOULD NORMALLY BE USED.
- PROTECTION AGAINST WATER INFILTRATION CAN BE ACHIEVED BY ADDING A DRIP CAP AT THE HEAD AND RECESSING THE LOUVER AS A MINIMUM (SEE FIGURE G). ADDITIONAL PROTECTION CAN BE ACHIEVED BY ADDING A GUTTERRRRRR STYLE DRIP CAP AT THE HEAD, A WATER TIGHT DRIP PAN, AND AN OPTIMAL DRAIN
- ALL HARDWARE SUCH AS CLIPS, ANGLES, AND ADDITIONAL BRACING ARE SUPPLIED BY OTHERS UNLESS OTHERWISE NOTED.

PROJECT:	
LOCATION:	
ARCHITECT:	
CONTRACTOR:	
CUSTOMER:	DATE:

