

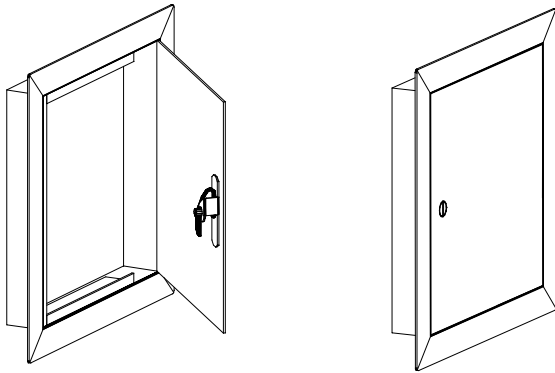
# L&L LOUVERS INC.

12355 DOHERTY STREET  
 RIVERSIDE, CA. 92503  
 (951) 735-9300 FAX:(951)735-4628  
 E-MAIL: info@louver1.com

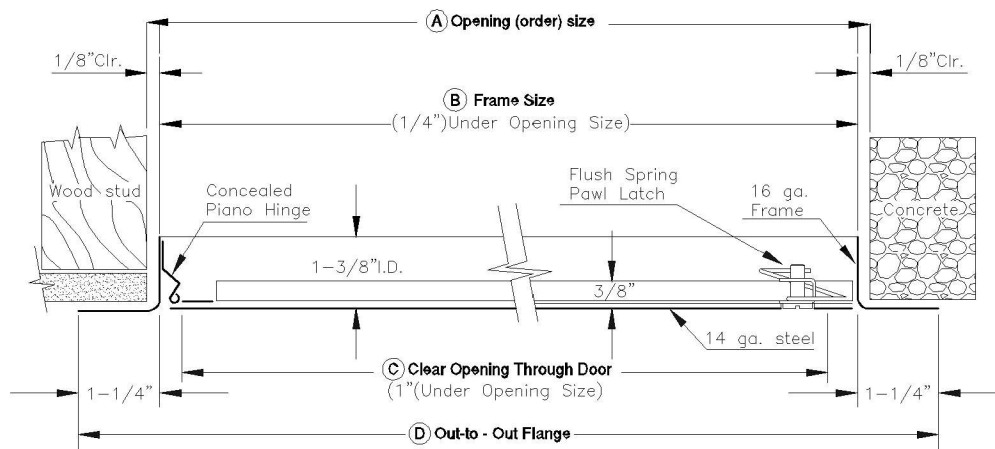
# MODEL 500-S

## STANDARD MULT-USE ACCESS DOOR

for installation in surfaces such as wallboard, plaster, wood or masonry.



This 14-gauge steel door is intended for multi-use application. It is easily and quickly installed wallboard, plaster, block or wood surfaces. The 1-1/2 inch frame reveal conceals rough openings and adds strength and rigidity to the whole unit. The flush spring pawl latch is supplied with a standard screwdriver operator but can be quickly and easily exchanged for an Allen key stud. Key-operated cylinder locks are available as an addition to, or in place of, the standard latches. The standard finish of stock items is a light grey prime coat. Consult your building inspector for local codes or these instances.



### CONSTRUCTION:

- DOOR:** 14 Ga., Flat, galvanized (jetcoat) steel.
- FRAME:** 16 Ga., mitered and welded corners, galvanized (jetcoat).
- HINGE:** Continuous, concealed, piano type with stainless steel pin.
- LOCK:** Flush, screwdriver-operated, self-adjusting spring pawl latch. (ALL DOORS OVER 22" ARE SUPPLIED WITH 4 OR MORE LATCHES.) Allen keyed latches and keyed cylinder locks are available on request, as well as other special types of locking devices.
- FINISH:** Rustproof, "cool-phos", water-free iron phosphate coating and baked on polyester powder prime coat paint. Light grey semigloss color is standard, but white and medium bronze are available on orders of 25 or more units. Any custom color is available at an increase in cost.

### SIZES: (SEE PRICE LIST FOR STANDARD SIZES.)

A	B	C	D
<b>Opening (Order Size)</b>	<b>-1/4" from A</b>	<b>-1" from A</b>	<b>+2 1/2" to A</b>
(i.e.) 12" x 12"	11 3/4" x 11 3/4"	11" x 11"	14 1/2" x 14 1/2"

- A - Opening Order Size
- B - Frame Size - 1/4" less than "A".
- C - Clear opening - 1" less than "A".
- D - Overall size of Frame - 2 1/2" larger than "A".

L&L LOUVERS manufactures all sizes of access doors.

PROJECT:	
LOCATION:	
ARCHITECT:	
CONTRACTOR:	
CUSTOMER:	DATE: